

CERTIFIED LAND CORNER RECORDATION

MAY 5 1988

DESCRIPTION OF CORNER EVIDENCE FOUND, AND ORIGINAL RECORD (if known)  
 Found no evidence of previous monumentation

S.3 S.2  
 S.10 S.11  
 T. 13N., R. 64W.

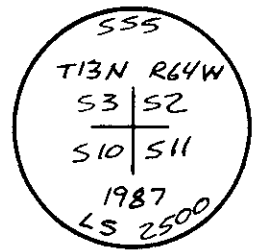
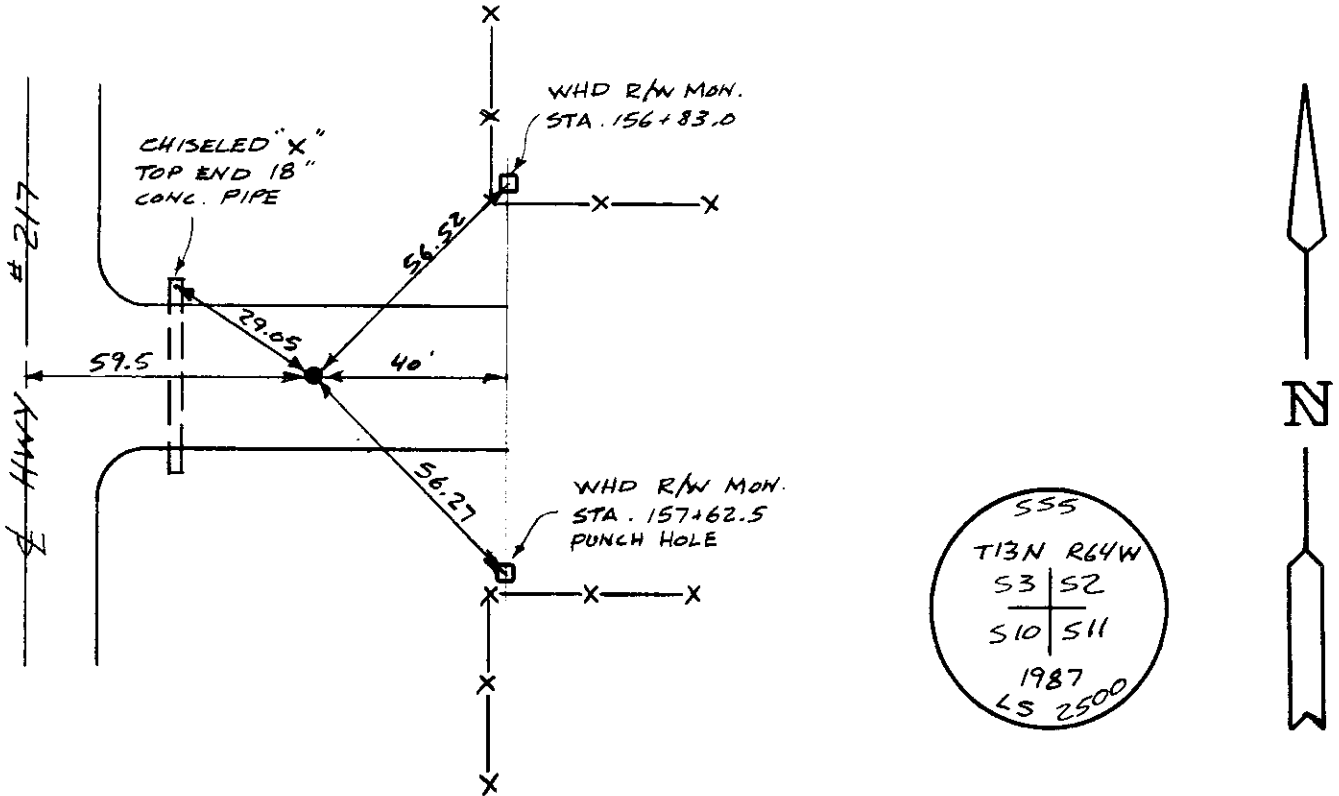
6th P.M. G.L.O. Record - Granite boulder 19" x 10" x 6" - Edwin James & Alfred M. Rogers, Deputy Surveyors, June 6, 1871.

DESCRIPTION OF MONUMENT AND ACCESSORIES ESTABLISHED TO PERPETUATE THE ORIGINAL LOCATION OF THIS CORNER:

at the corner: Set 5/8" x 18" rebar with 2" aluminum cap flush in center line bituminous driveway, 40' West of East R/W of state highway #217 & 60' East of center line of highway.

Accessories : See ties below

SKETCH, WITH COURSE AND DISTANCE TO ADJACENT CORNER IF DETERMINED IN THIS SURVEY.  
 (May Sketch or Paste Reproduction on Reverse Side.)



I, John A. Steil certify that I have carefully performed or reviewed the work done on the diagrammed corner as reported on this recordation form and approve the same.

*John A. Steil*  
 Signature of Surveyor

L.S. 2500  
 Registration No.

STATE OF WYOMING,  
 Office of Clerk and Recorder,  
 County of Laramie

This "corner record" was filed for record on the 5th day of May, 1988, was noted on the cross-index plat and is assigned page No. 1967, in book No. 1259.

*Janet C. Whitehead*  
 County Official

Cross Index No.	<u>E-17</u>	T. <u>13N</u>	R. <u>64W</u>	Mer. <u>6th</u>
		T. _____	R. _____	Mer. _____
		T. _____	R. _____	Mer. _____
		T. _____	R. _____	Mer. _____
		T. _____	R. _____	Mer. _____
		T. _____	R. _____	Mer. _____
		T. _____	R. _____	Mer. _____